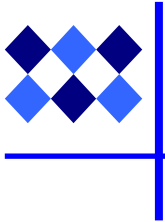


TRANSPORTATION FUND

The Transportation Fund, established in June 1986, is a governmental special revenue fund, used to account for the receipt and disbursement of the motor fuels tax, state recordation tax, and transportation bond proceeds. It is also the repository for monies received from other sources for specific transportation projects.

Transportation Fund revenue pays the subsidy for FRED, VRE, PRTC, Stafford Regional Airport Authority, and is available for a variety of transportation projects in the County.

Certain road projects are funded with impact fees or through special tax districts. See Road Impact Fee West Fund and Garrisonville Road Service District Fund in the Other Funds section for a discussion of road projects funded with these specific revenue sources.

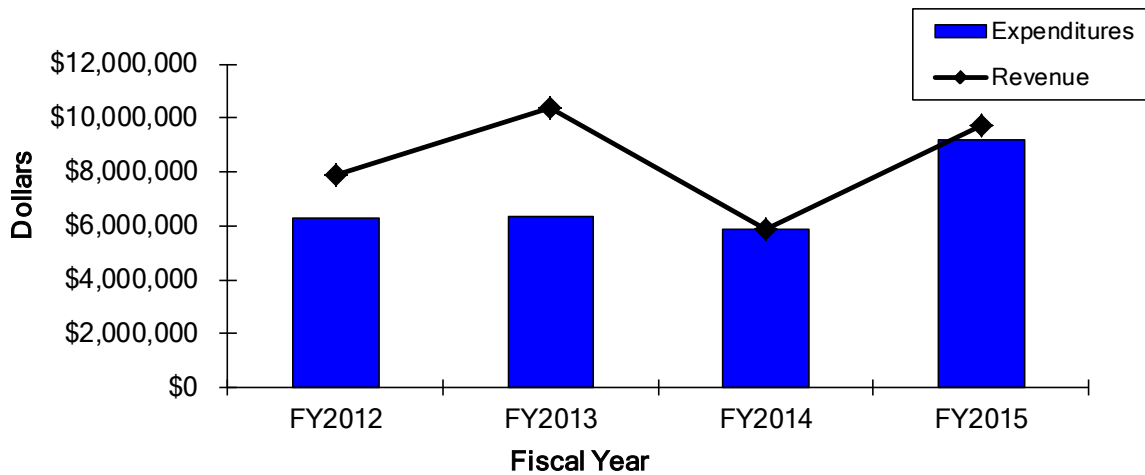


Our Mission: A special revenue fund established for the purpose of enhancing the efficiency and quality of transportation for County businesses and residents.

BUDGET SUMMARY

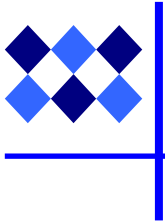
	FY2012 Actual	FY2013 Actual	FY2014 Adopted Budget	FY2015 Adopted Budget	FY2015 Change '14 to '15	
Costs						
Operating	\$4,206,363	\$3,537,417	\$3,286,665	\$3,389,114	\$102,449	0.00%
Capital	2,101,340	2,841,877	2,603,335	5,831,779	3,228,444	124.01%
Total	\$6,307,703	6,379,294	5,890,000	9,220,893	3,330,893	56.55%
Revenue	7,894,788	10,406,691	5,890,000	9,756,973	3,866,973	65.65%
Difference	(\$1,587,085)	(\$4,027,397)	\$0	\$536,080	\$536,080	0.00%

Funded Positions						
Full-Time Positions	2	0	0	0	0	0.00%



SIGNIFICANT BUDGET CHANGES

- Increase in VRE subsidy due to increased ridership share
- Road projects



TRANSPORTATION

DEPARTMENTAL GOALS/OBJECTIVES

- Implement 2008 road bond referendum projects
- Provide public transit service in the County with FREDericksburg Regional Transit (FRED)
- Provide commuter rail service in the County with Virginia Railway Express (VRE)
- Complete selected road and pedestrian improvements within the County

DEPARTMENTAL SERVICE LEVELS

	FY2013 Actual	FY2014 Budget	FY2015 Plan
Outputs			
VRE system average daily ridership	18,878	20,100	19,200
Efficiencies			
County subsidy for VRE	\$2,347,707	\$2,529,281	\$2,689,391



TRANSPORTATION REGIONAL & COMMUNITY AGENCIES

Agency Name

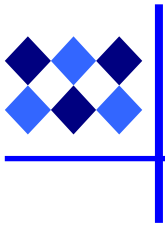
Mission

Fredericksburg Regional Transit

Provides accessible, affordable, dependable, efficient, environmentally sound, and safe and secure transportation for people who reside or work or visit within the Fredericksburg, Virginia region.

Stafford Regional Airport

Provides safe airport and aircraft operations, unparalleled customer service, and modern aviation facilities in a fiscally prudent manner.



TRANSPORTATION FUND PROJECTS

Virginia Railway Express

The Virginia Railway Express (VRE) provides commuter rail service to Northern Virginia and Washington, D.C. on two routes, the Manassas and Fredericksburg Lines. Stafford County has two VRE stations located off of Brooke Road and Leeland Road. VRE currently carries approximately 19,000 passengers a day on both lines. The VRE is a cooperative venture of the Potomac and Rappahannock Transportation Commission (PRTC) and the Northern Virginia Transportation Commission (NVTC). Stafford participates in the PRTC. All jurisdictions served by VRE contribute a financial subsidy to the rail system. The largest expenditure of the County's Transportation Fund is our subsidy to VRE.

FRED Bus Service

The Fredericksburg Regional Transit System (FRED) provides bus transit service on fixed routes in Stafford County.

Stafford Regional Airport

The 550-acre Stafford Regional Airport serves as the "reliever airport" for general traffic to Washington Dulles International and Reagan National Airports and supports expansion of the region's global business opportunities. There is ample space for approximately 100 locally based aircraft.

The Stafford Regional Airport is located along Interstate 95, 30 miles south of the Capital Beltway I-495 interchange. It is centrally located within Stafford and is served by the Centreport Parkway (SR-8900) Exit 136 interchange. The Airport location is convenient to the County's two commuter rail stations.

The accessibility of the Regional Airport makes it convenient for corporate executives to visit Stafford in search of business relocation or expansion sites. Commercial and industrial zoned properties in proximity to the airport will open up new opportunities for Stafford to attract high technology-based businesses.

More information on the Stafford Regional Airport "RMN" can be obtained from the Regional Airport Authority located within the airport at 75 Aviation Way, Stafford, Virginia, or by calling (540) 658-1212, or by visiting their website at www.staffordairport.com.

Bicycle/Pedestrian Trails

The County has received grants from VDOT under the Transportation Enhancement Program to build several bike pedestrian trails. Funds from the Transportation Fund will pay the required local match to these grant funds.

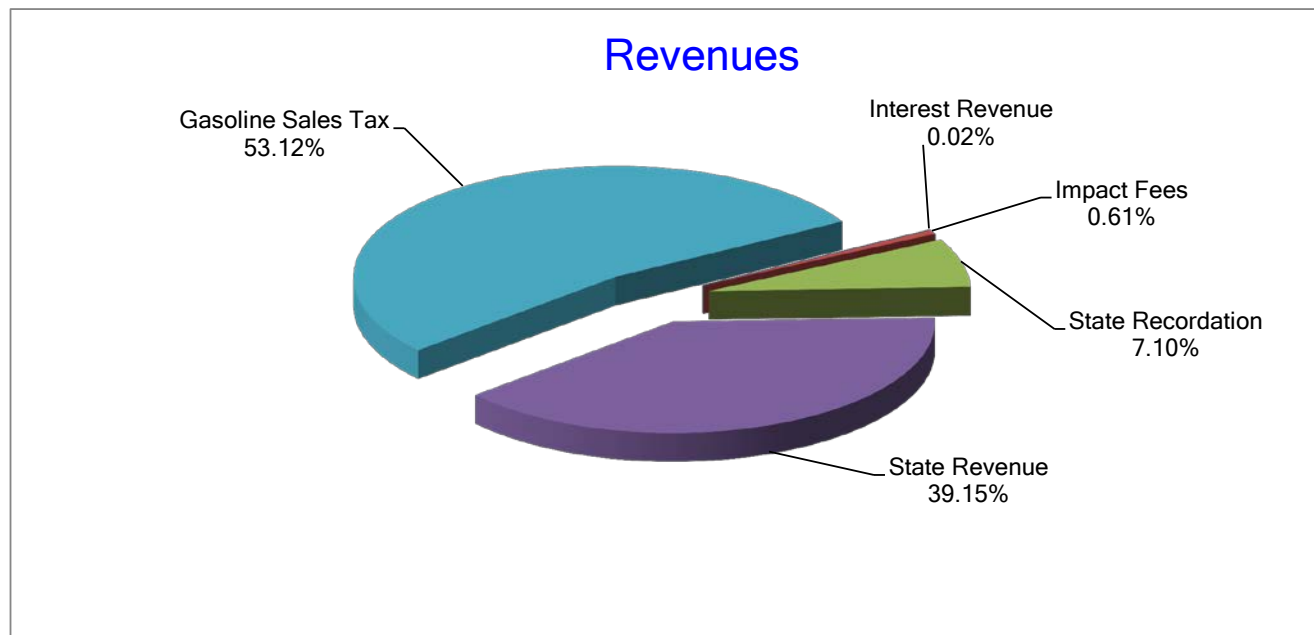
Local Road Projects

Local road projects include approved bond projects, defaulted developers' projects, and other special road projects as approved by the Board of Supervisors.



TRANSPORTATION FUND REVENUES

	FY2013 Actual	FY2014 Adopted	Adopted Budget	FY2015 Changes '14 to '15	
Gasoline Sales Tax	\$ 5,616,151	\$ 5,173,000	\$ 5,182,849	\$ 9,849	0.19%
State Recordation	693,624	715,000	693,000	(22,000)	-3.08%
Interest Revenue	10,210	2,000	2,000	0	0.00%
Federal Revenue	430,564	0	0	0	0.00%
State Revenue	550,575	0	3,819,124	3,819,124	100.00%
Bond Proceeds	2,822,597	0	0	0	0.00%
Impact Fees	0	0	60,000	0	100.00%
Transfers from other funds	271,100	0	0	0	0.00%
Miscellaneous	11,870	0	0	0	0.00%
Total	\$ 10,406,691	\$ 5,890,000	\$ 9,756,973	\$ 3,866,973	65.65%



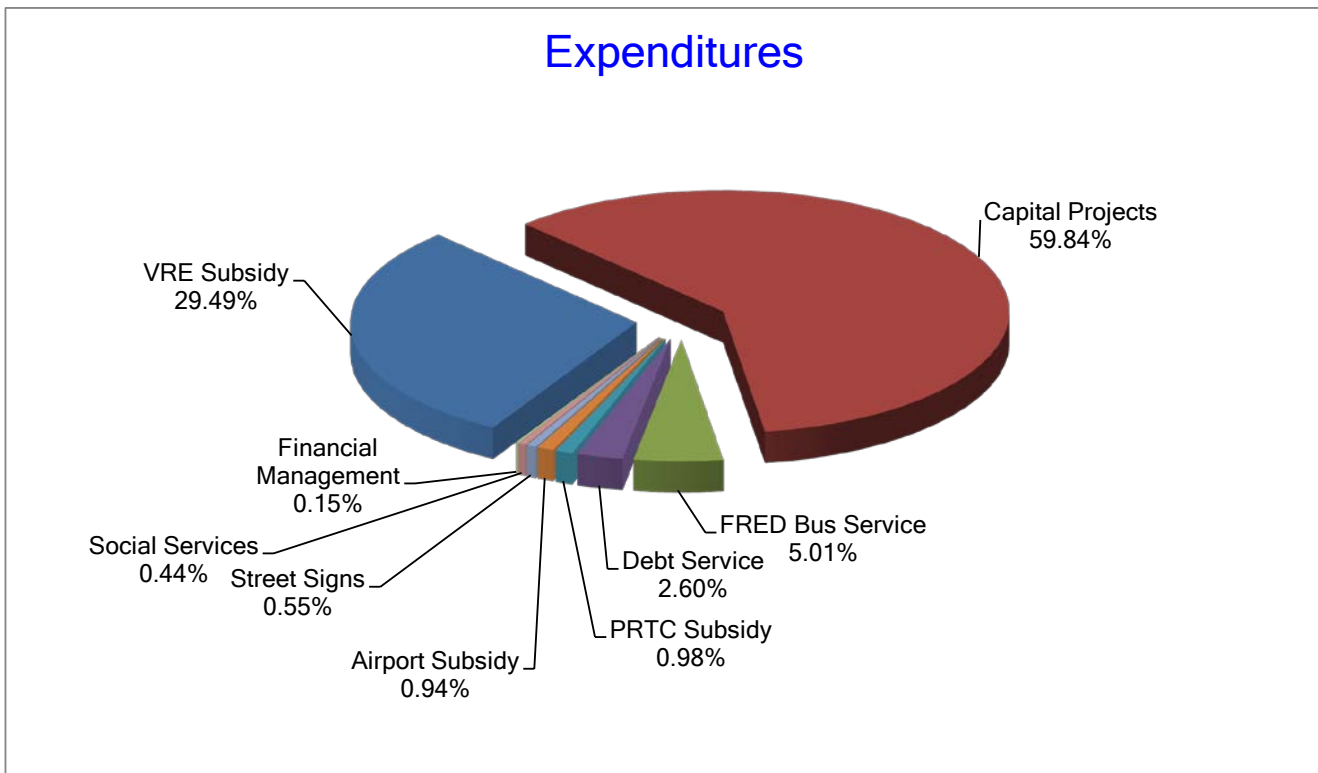
FUND BALANCE

	FY2013 Actual	FY2014 Adopted	Adopted Budget	FY2015 Changes '14 to '15	
Fund Balance, Beginning of Year	\$10,551,063	\$14,587,497	\$14,597,497	\$10,000	0%
Revenues	10,406,691	5,890,000	9,756,973	3,866,973	0%
Expenditures	(6,370,257)	(5,880,000)	(9,220,893)	3,340,893	-57%
Fund Balance, End of Year	\$14,587,497	\$14,597,497	\$15,133,577	\$536,080	4%



TRANSPORTATION FUND EXPENDITURES

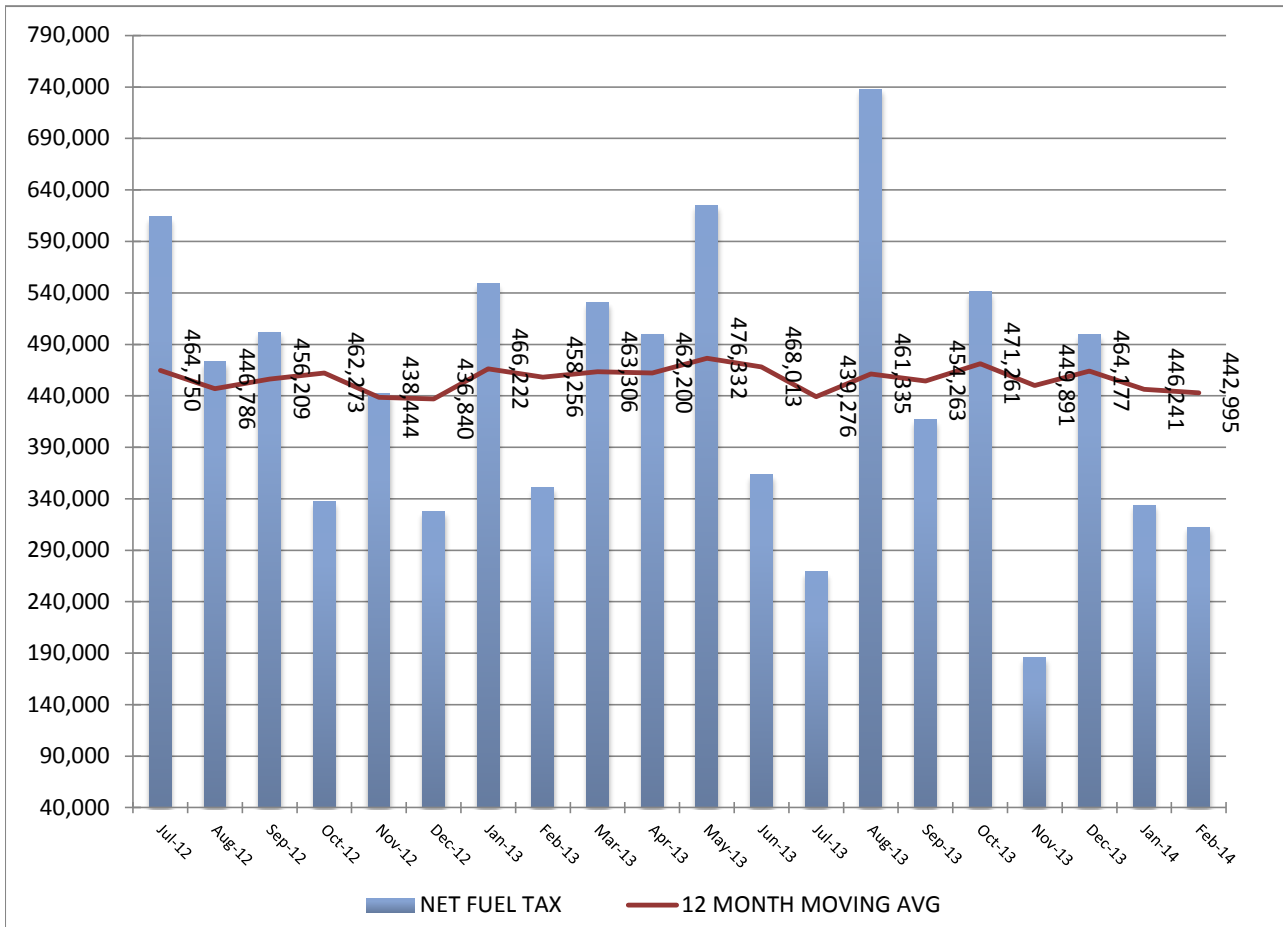
	FY2013 Actual	FY2014 Adopted	Adopted Budget	FY2015 Changes '14 to '15	
VRE Subsidy	\$ 1,873,540	\$ 2,529,281	\$ 2,689,361	\$ 160,080	6.33%
PRTC Subsidy	82,000	93,400	89,300	(4,100)	-4.39%
Financial Management	17,109	13,333	13,410	77	0.58%
Transportation Fee Analysis	8,000	0	0	0	0.00%
FRED Bus Service	526,337	526,337	457,299	(69,038)	-13.12%
Airport Subsidy	85,714	85,714	85,714	0	0.00%
Gateway	110,111	100,000	100,000	0	0.00%
Road Improvements	1,916,249	2,441,935	5,458,277	3,016,342	123.52%
Street Signs	25,038	50,000	50,000	0	0.00%
Social Services	24,917	40,000	40,000	0	0.00%
Bike Trails	71,499	0	0	0	0.00%
Land Purchase	629,743	0	0	0	0.00%
Staffordboro Parking Lot	1,000,000	0	0	0	0.00%
Debt Service	0	0	237,532	0	0.00%
Total	\$ 6,370,257	\$ 5,880,000	\$ 9,220,893	\$ 3,103,361	52.8%





PRTC NET FUEL TAX COLLECTION

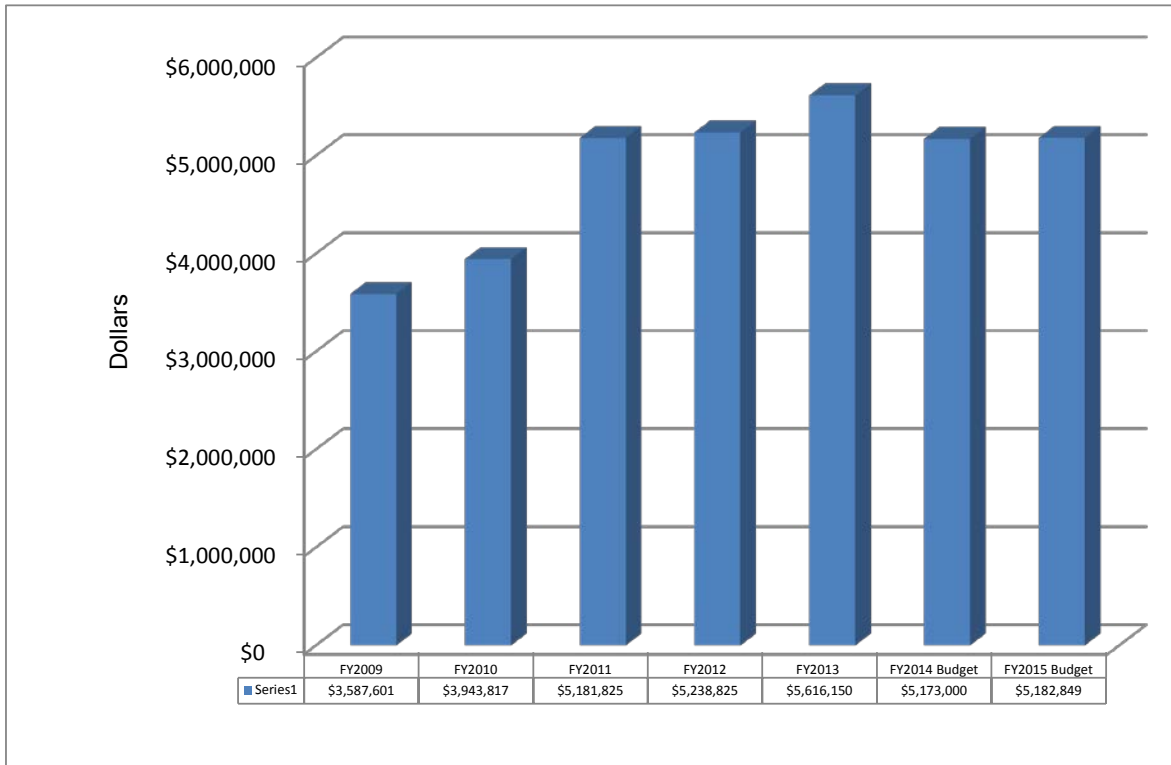
This graph shows the monthly fuel tax collection, for FY2013 and FY2014 (through February). Fuel tax revenue fluctuation is dependent on the price and consumption level of fuel, as well as the timeliness of dealer payments.





FUEL TAX COLLECTION

This graph illustrates historical and projected future fuel tax collections.



Until January 1, 2010, the tax was based on 2% of the retail fuel price. After January 1, 2010, the calculation changed to 2.1% of the wholesale price of fuel.

